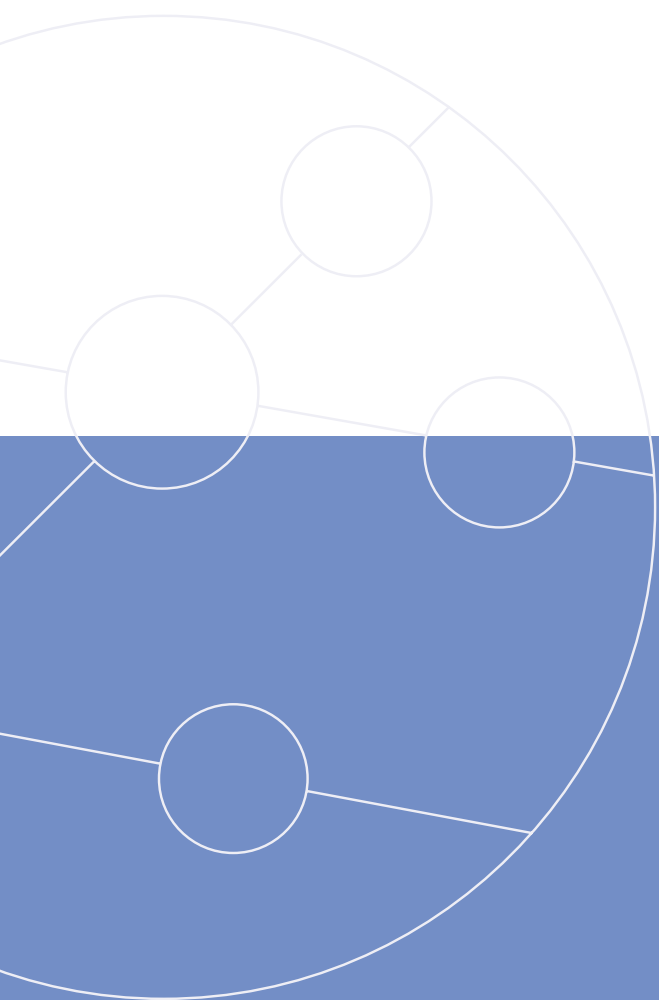


ToolKit



ISDN Test Equipment



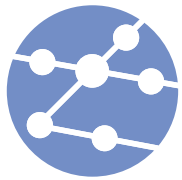
ISDN

Basic Rate Installers



TrendCommunications

Everything the ISDN installation technician needs for testing and troubleshooting in one portable kit . . .



ToolKit

Basic Rate Installers Field ToolKit

With the increasing deployment of ISDN Basic Rate services and equipment, the field technician needs to have to hand the tools to ensure a satisfactory installation and rapid resolution of problems. The Installers Field ToolKit includes just the right tools to remove the guess work and sort out the problems when under pressure.

The ToolKit contains an **AuroraProfi** S-Bus Wiring Tester, an **AuroraPlus** hand-held Basic Rate Tester and the new '**AuroraExpert** for Plus' protocol analysis package which has been specifically designed to operate in conjunction with the **AuroraPlus**.

S-Bus wiring errors are well known to be one of the most simple yet confounding problems that can occur with an installation. Resolving wiring problems can be very time consuming and often lead to incorrect assumptions as to where a fault lies. The **AuroraProfi** with its Automatic Test Cycle makes testing all aspects of the S-Bus wiring rapid and simple – providing all the information you need.

- **AuroraPlus** combined Basic Rate ISDN and POTS tester for terminal simulation at the 'U', 'S' and POTS interfaces
- **AuroraProfi** 'S-Bus' wiring tester for checking wiring, line power and termination resistors on the 'S-Bus'
- **AuroraExpert** for Plus PC-based protocol decode package for more detailed analysis of problems both on-site and back at base
- Carry-case with accessories, cables and manuals

Using the full-spec **AuroraPlus** provided in the ToolKit, the Installer can make and receive data or voice calls on one or both of the Basic Rate B-Channels, confirming to himself and the customer correct operation of basic calls and supplementary services provisioned. An analogue interface is provided to enable testing of POTS lines or analogue ports on NTs (Network Terminators). The tester can be powered from the line or from its internal rechargeable battery. A simple on-screen protocol decode is provided to indicate problem areas.

The **AuroraExpert** for Plus protocol analysis package is specifically tailored for use with the **AuroraPlus** and to the needs of ISDN installation technicians and support engineers and provides a truly plug and play ISDN protocol analyser.

AuroraExpert for Plus **ISDN Basic Rate** **Protocol Analysis** **Software**

AuroraExpert for Plus is a Windows package that provides an intuitive method of analysing D-Channel traffic and getting to the root of problems with an installation. Used on a notebook PC, **AuroraExpert** becomes an extension of the **AuroraPlus** providing a portable analyser capable of displaying a detailed decode of both sides of the network protocol.

The PC communications settings are automatically set to be correct for interworking with the **AuroraPlus** eliminating compatibility issues and minimising setup time.

- Decode Layer 1, 2 and 3 events
- Each event is time stamped for isolation of network timer problems
- Analyse decoded data immediately for on the spot diagnosis
- Send to a colleague or supervisor by modem or email for detailed examination
- Windows Standard Multi Document Interface – familiar Windows look and feel
- Icon toolbar and tooltips
- Multi-window and clipboard support
- Context-sensitive Help, ISDN Help and convenient quick reference guide

AuroraProfi **ISDN S-Bus Wiring** **Tester**

The **AuroraProfi** is an easy-to-use tester that checks the wiring installation on the ISDN Basic Rate S-Bus, including “Phantom Power” and termination resistors. It will physically test the pairs of an installed ISDN S-Bus and will detect and display open, crossed and shorted connections. Using its Automatic Test Cycle the unit makes testing a rapid and simple task.



AuroraPlus **ISDN Basic Rate** **Tester**

The **AuroraPlus** provides the communications technician with a rapid, reliable and foolproof ISDN Basic Rate installation tool.

The **AuroraPlus** simulates the activity of Terminal Equipment on the S-Bus and the combined functionality of the Network Terminator and associated Terminal on the U interface. It is capable of voice, data (BERT), Teleservice and Supplementary Service testing. Protocol sequences captured from the line can be stored for subsequent viewing or downloading into the **AuroraExpert for Plus** protocol analysis software. The **AuroraPlus** is field upgradeable using a local PC. This enables enhanced software to be added to support new network features.





Trend Communications Ltd
Knaves Beech Estate
Loudwater
High Wycombe
Buckinghamshire
HP10 9QZ
United Kingdom

TrendCommunications

International: +44 (0)1628 524977
United Kingdom: 01628 524977
France: 01 69 35 54 70
Deutschland: 089 32 30 09 11
Italia: 02 73 91 414
España: 93 300 3313
India: 022 859 7463
Email: infoline@trendcomms.com
Web: www.trendcomms.com

A Member of the Telemetrix plc Group

Distributor

Trend **Aurora** is a registered trade mark of Trend Communications Ltd.

TrendCommunications reserves the right to change specifications without notice.